



Photo credit: Dayo Ibitoye

# Cote Divoire-Liberia Cross border Fact Sheet

---

## DEFINITION OF TERMS



**Border length**  
Distance in Kilometers of the border between two countries.



**Borderland area**  
This is the area in Square Kilometers covered by the borderland Municipalities/ Districts.



**Borderland municipality**  
Administrative Districts or Counties close to the border rather than very large provinces.

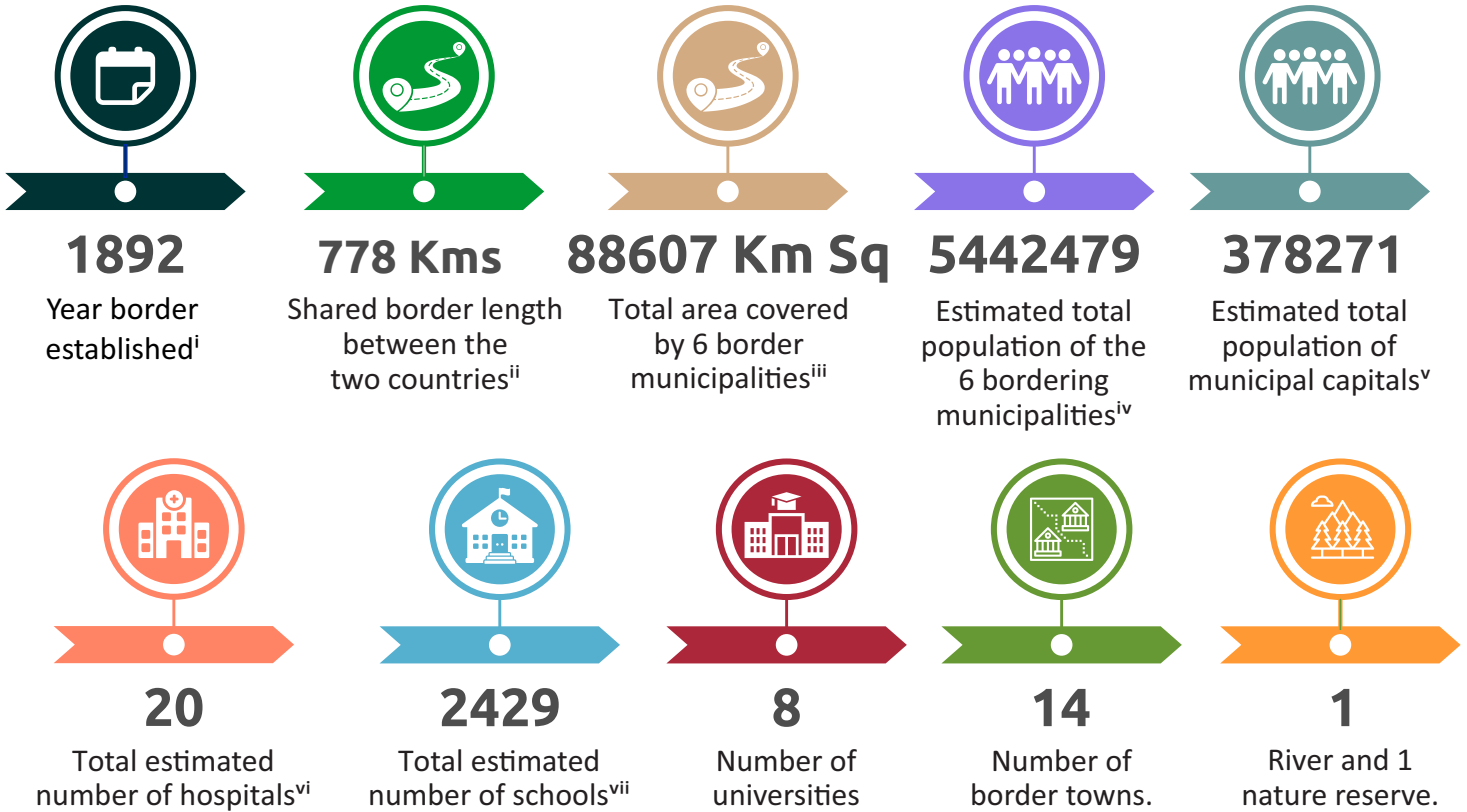


**Population**  
All inhabitants of a particular place.

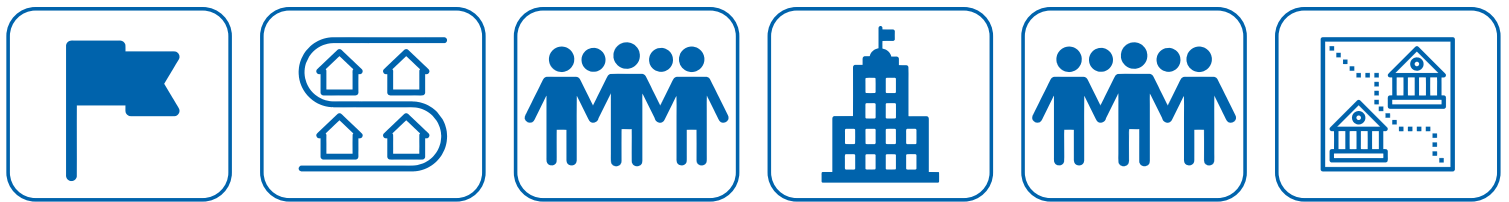


**Year**  
Date when the border was originally established.

## KEY FACTS AND FIGURES



6 municipalities border the countries as summarized in the table below:

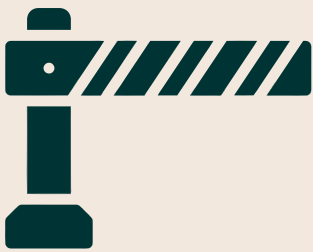


Country	Municipality/ District	Population	Municipal Capital	Population	Border towns
✓ Cote Divoire	✓ Mountains	✓ 2,371,920	✓ Man	✓ 149,041	✓ Gnato
✓ Cote Divoire	✓ Bas-Sassandra	✓ 2,280,548	✓ San-Pedro	✓ 164,944	✓ Jobloke
✓ Liberia	✓ Nimba	✓ 462,026.00	✓ Sanniquellie	✓ 11,854	✓ Grabo
✓ Liberia	✓ Grand Gedeh	✓ 125,258	✓ Zwedru	✓ 25,349	✓ Noe
✓ Liberia	✓ River Gee	✓ 66,789	✓ Fish Town	✓ 3,566	✓ Yobloke
✓ Liberia	✓ Maryland	✓ 135,938	✓ Harper	✓ 23,517	✓ Bokle, Kodeken, Yeoh Town, Bretou, Binhouye, Kpabli, Sodu, Towai Town, Behoue



## Major Economic Activities

A Formal			B Informal	
<p>Subsistence farming (rice, cassava)</p>		<p>Commercial farming. (rubber)</p>		<p>Small-scale cross-border trade</p>
<p>Livestock Keeping</p>	<p>Tourism</p>	<p>Mining</p>	<p>Artisanal mining.</p>	



## Border Closures since 2010



Yes/ No

Yes

Reason/s

N/A

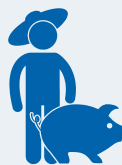
## Opportunities for Development Assistance & Partnerships



Support grains value and supply chain development.



Promote creative economies and tourism potentials of the borderland.



Invest in improving farming and livestock production, processing and marketing capabilities.



Provide safe and secure environment for informal cross border traders to conduct their livelihoods activities.

## Sources

- <sup>i</sup> International Boundary Study, 1973, <https://web.archive.org/web/20201002065136/https://fall.fsulawrc.com/collection/LimitsinSeas/IBS132.pdf>, accessed 0 November 2021
- <sup>ii</sup> 1,359 Kms shared border length between the two countries
- <sup>iii</sup> City Populations, 2014, [https://www.citypopulation.de/en/iv\\_orycoast/cities/](https://www.citypopulation.de/en/iv_orycoast/cities/), Accessed 1 November 2021
- <sup>iv</sup> NATIONAL POPULATION AND HOUSING CENSUS, 2008, [https://www.emansion.gov.lr/doc/Population\\_by\\_County.pdf](https://www.emansion.gov.lr/doc/Population_by_County.pdf), Accessed 1 November 2021
- <sup>v</sup> City Populations, 2008, <https://www.citypopulation.de/Liberia.html>, Accessed 1 November 2021
- <sup>vi</sup> WHO, 2021, <https://www.who.int/malaria/areas/surveillance/public-sector-health-facilities-ss-africa/en/>, Accessed 01 November 2021.
- <sup>vii</sup> County Development Agenda, 2012, <https://www.emansion.gov.lr/doc/NimbaCDA.pdf>, Accessed 1 November 2021.