



Djibouti-Eritrea Cross border Fact Sheet

ABOUT

The UNDP ABC is a new flagship programme focused on empowering borderland communities and promoting socio-economic development and peace across Africa's borderlands.

METHODOLOGY

This factsheet is compiled by the UNDP ABC using open-source verifiable data and information. Triangulation of data and information was done by way of cross-referencing with at-least three authoritative sources and hyperlinks included to ensure validity and accuracy. The process is iterative in nature and continuous updating of the data and information will be done to ensure that it is current.

DEFINITION OF TERMS



Border length
Distance in Kilometers of the border between two countries.



Borderland area
This is the area in Square Kilometers covered by the borderland Municipalities/Districts.



Borderland municipality
Administrative Districts or Counties close to the border rather than very large provinces.

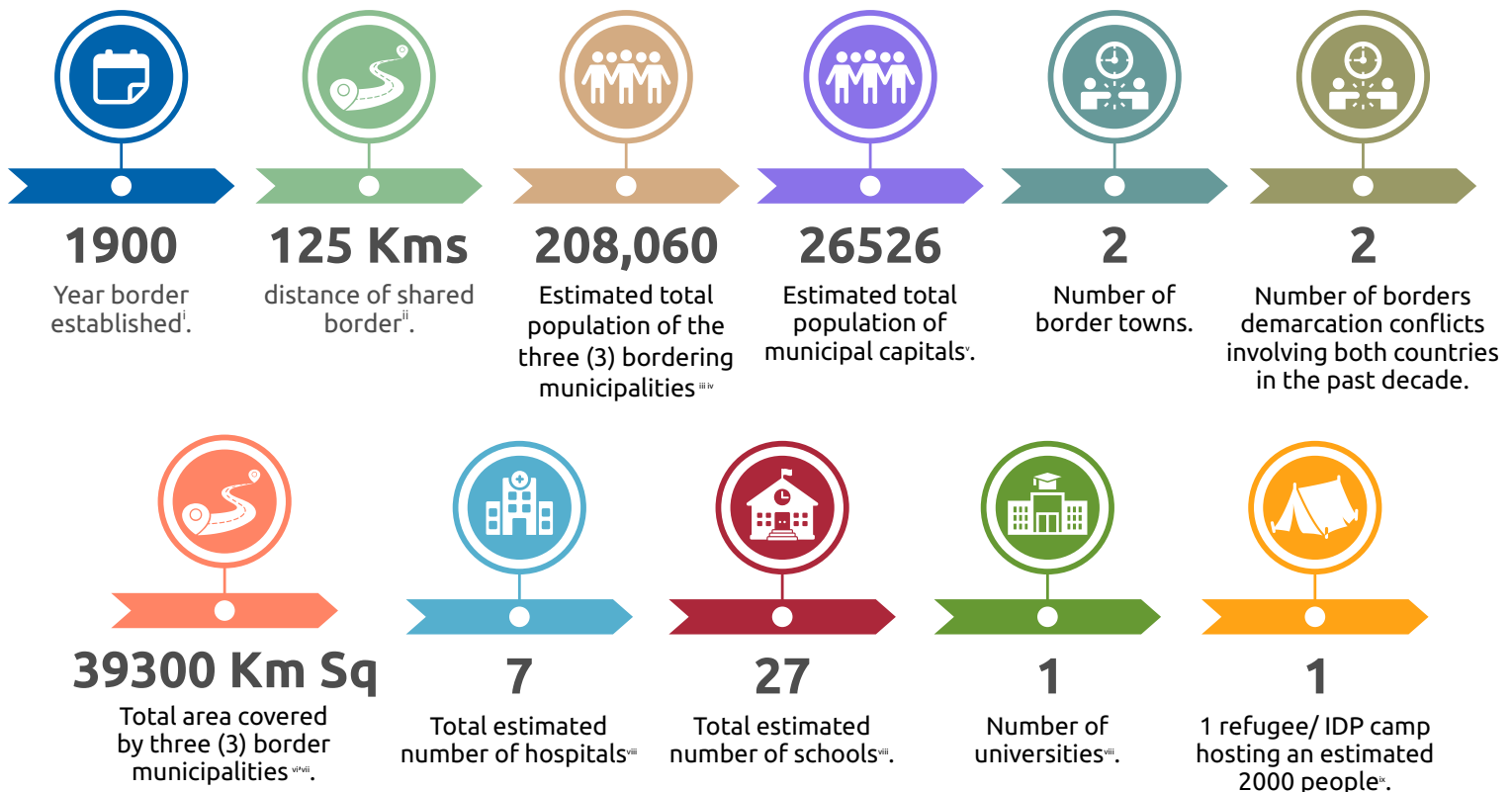


Population
All inhabitants of a particular place.



Year
Date when the border was originally established.

KEY FACTS AND FIGURES



Three (3) municipalities border the countries as summarized in the table below:

Country	Municipality/District	Population	Municipal Capital	Population	Border towns
✓ Djibouti	✓ Obock	✓ 37,856	✓ Obock	✓ 11706	✓ Rehayto
✓ Djibouti	✓ Tadjourah	✓ 86,704	✓ Tadjourah	✓ 14820	✓ Bissidiro
✓ Eritrea	✓ Dehubawi	✓ 83500	✓ Assab	✓ No data	
	✓ Keyih Bahri				



Major Economic Activities

A

Formal



Trade, Agricultural activities include subsistence farming, commercial farming, pastoralism and livestock keeping.



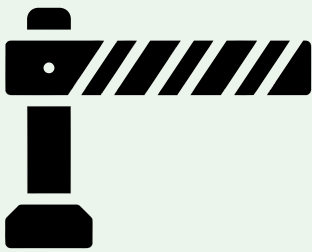
Transport sector (port, logistics and related services) is a major industry player as both countries share one of the busiest shipping routes (Red Sea transit point) connecting Europe, the Middle East and Asia.

B

Informal



Key informal activities include artisanal fishing and small-scale trading.



Border Closures since 2010



Yes/ No

Yes



Reason/s

Covid-19

Opportunities for Development Assistance & Partnerships



Investments in durable solutions for refugees.



Technical support for border demarcation.



Covid-19 border related closures impacted on informal cross border trade hence the need for post recovery interventions.

Disclaimer

This factsheet is based on the latest available data as of 1st December 2021.

All necessary efforts have been taken to make sure that information contained in this publication is correct and not misleading. However, the possibility of errors or unintentional omissions cannot be excluded.

Sources

ⁱSovereign Limits, 2021, <https://sovereignlimits.com/boundaries/djibouti-eritrea-land>, Accessed 12 October 2021.

ⁱⁱCIA WORLD FACTBOOK, 2021, <https://www.cia.gov/the-world-factbook/countries/djibouti>, Accessed 20 April 2021.

ⁱⁱⁱStatistical Directory By Djibouti, 2012, <http://www.ministere-finances.dj/Annuaire2012Ver02102012-Correct3.pdf>, Accessed 12 October 2021.

^{iv}Population Statistics of Eritrea, 2005, <https://eritrea.opendataforafrica.org/indbym/population-statistics-of-eritrea-2005>, Accessed 12 October 2021.

^vCity Population, 2009, <http://www.citypopulation.de/Djibouti.html>, Accessed 12 October 2021.

^{vi}City Populations, 2009, <http://www.citypopulation.de/Djibouti.html>, Accessed 12/10/2021.

^{vii}Population Statistics of Eritrea, 2005, <https://eritrea.opendataforafrica.org/indbym/population-statistics-of-eritrea-2005>, Accessed 12 October 2021

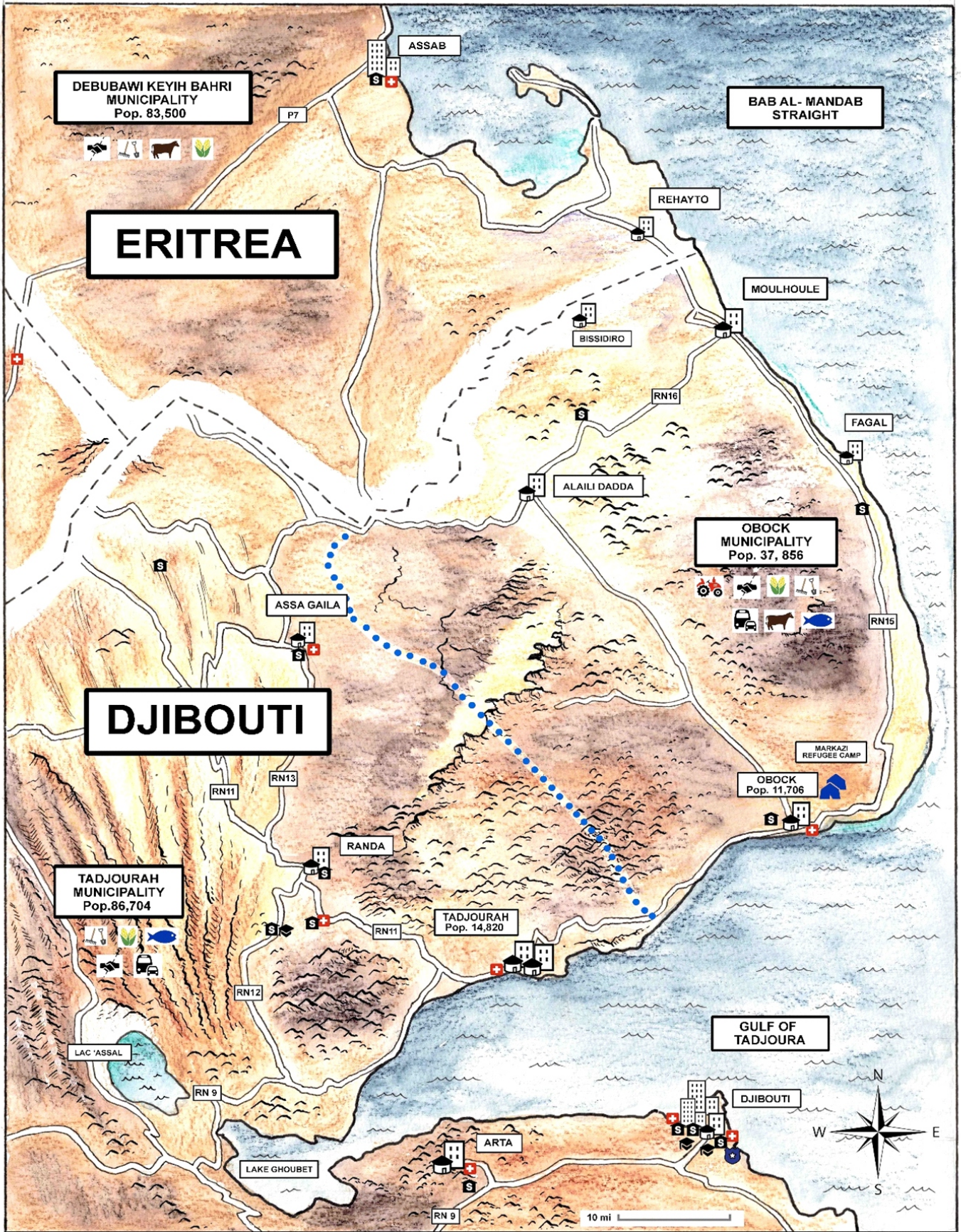
^{viii}Google Maps, [google.com/maps](https://www.google.com/maps), Accessed 12/10/2021.

^{ix}<https://crisis24.garda.com/alerts/2020/10/djibouti-authorities-to-close-land-borders-until-november-4-update-6>

For further information and comments, please contact: UNDP Africa Borderlands Centre (ABC)

<https://www.africa.undp.org/content/rba/en/home/AfricaBorderlandsCentre.html>

hello.africaborderlands@undp.org



KEY			
---	INTERNATIONAL BORDER		POLICE STATIONS
.....	STATE/COUNTY BORDER		PAVED ROADS
	CITY		SMALL SCALE TRADING
	TOWN		LIVESTOCK
	1 - 5 HOSPITALS		COMMERCIAL FARMING
	1 - 5 SCHOOLS		TRANSPORTATION
	1 - 5 UNIVERSITIES		COMMERCIAL MINING
	IDP CAMPS		ARTISANAL MINING
	INFORMAL CROSS BORDER TRADING		TOURISM
	AGRICULTURE		PASTORALISM
	ARTISANAL FISHING		OIL PRODUCTION
	WIND POWER		SEA / LAKE
	TIMBER		RIVER
			NATIONAL PARK