



# Liberia – Sierra Leone Cross border Fact Sheet

---

## ABOUT

The UNDP ABC is a new flagship programme focused on empowering borderland communities and promoting socio-economic development and peace across Africa's borderlands.

## METHODOLOGY

This factsheet is compiled by the UNDP ABC using open-source verifiable data and information. Triangulation of data and information was done by way of cross-referencing with at-least three authoritative sources and hyperlinks included to ensure validity and accuracy. The process is iterative in nature and continuous updating of the data and information will be done to ensure that it is current.

## DEFINITION OF TERMS



**Border length**  
Distance in Kilometers of the border between two countries.



**Borderland area**  
This is the area in Square Kilometers covered by the borderland Municipalities/ Districts.



**Borderland municipality**  
Administrative Districts or Counties close to the border rather than very large provinces.

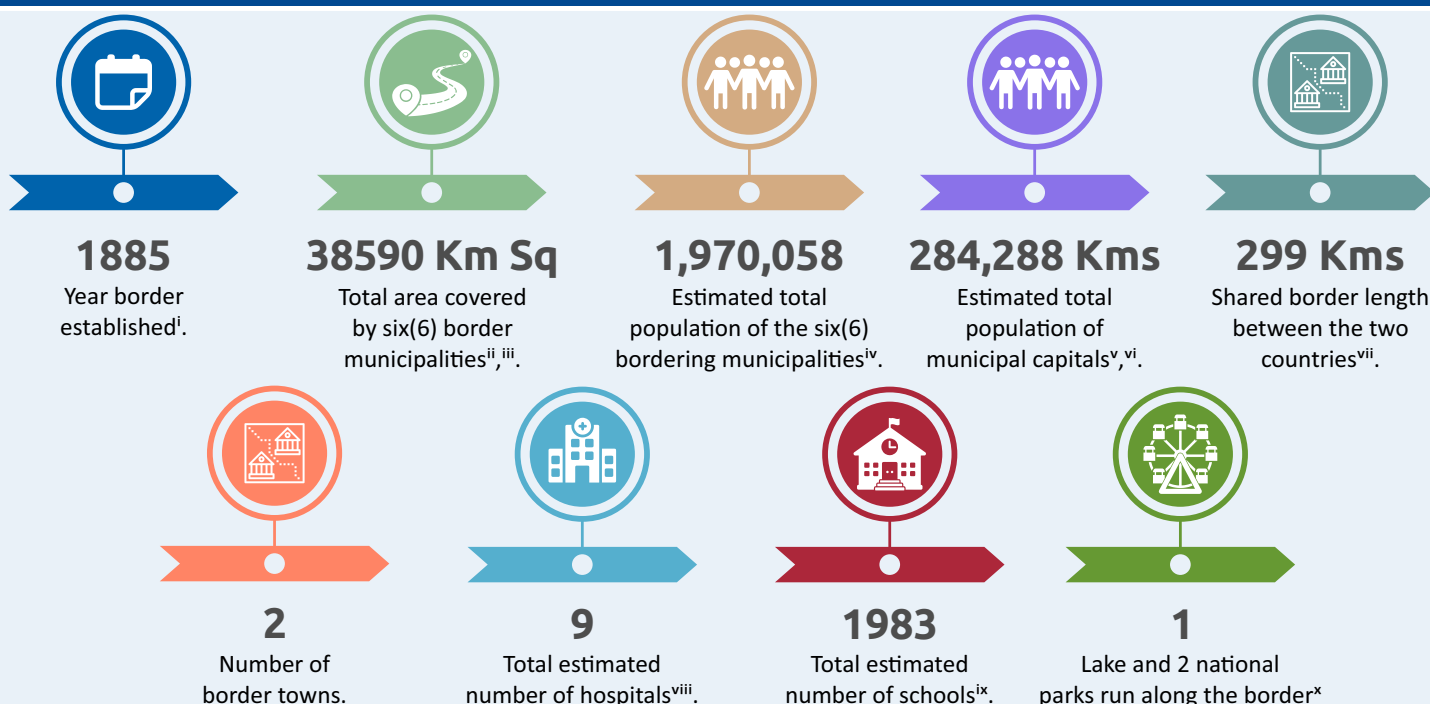


**Population**  
All inhabitants of a particular place.



**Year**  
Date when the border was originally established.

## KEY FACTS AND FIGURES



Six (6) municipalities border the countries as summarized in the table below:

Country	Municipality/ District	Population	Municipal Capital	Population	Border towns
✓ Liberia	✓ Grand Cape Mount-LIB	✓ 127,076	✓ Robersport	✓ 3,933	✓ Baiwala-SIE
✓ Liberia	✓ Gbarpolu-LIB	✓ 83,388	✓ Bopolu	✓ 17,719	✓ Bandajuma-SIE
✓ Liberia	✓ Lofa-LIB*	✓ 276,863	✓ Voinjama	✓ 42,790	
✓ Sierra – Leone	✓ Kailahun-SIE*	✓ 526,379	✓ Kailahun	✓ 13,108	
✓ Sierra – Leone	✓ Kenema-SIE	✓ 609,891	✓ Kenema	✓ 200,443	
✓ Sierra – Leone	✓ Pujehun-SIE	✓ 346,461	✓ Pujehun	✓ 6,095	



## A Formal



Some of the formal economic activities include commercial farming, subsistence farming, livestock keeping, Agriculture, Tourism, Mining, Agro-Forestry, Logging, Wildlife, and Fishing

## B Informal



Key informal activities include artisanal mining, cross-border trade, and small-scale trading.



**Border Closures since 2010**



Yes/ No

Yes



Reason/s

Covid-19

## Opportunities for Development Assistance & Partnerships



Investments to diversify from reliance on natural resources to boost communities' resilience



Support agriculture and livestock value and supply chain development.



Support the development of safe and labour-friendly forestry, wildlife, logging and fishing practices.



Strengthen peace architecture to foster post-conflict stability and action plans.

## Sources

<sup>i</sup>International Boundary Study, 1972, <https://web.archive.org/web/20191001160042/https://fall.fsulawrc.com/collection/LimitsinSeas/IBS129.pdf>, Accessed 2 November 2021.

<sup>ii</sup>City Populations, 2008, <https://www.citypopulation.de/Liberia.html>, Accessed 2 November 2021

<sup>iii</sup>City Populations, 2015, <https://www.citypopulation.de/en/sierraleone/admin/>, Accessed 2 November 2021. N/A

<sup>iv</sup>LISGIS, 2021, <https://www.lisgis.net/>, Accessed 2 November 2021.

<sup>v</sup>City Populations, 2008, <https://www.citypopulation.de/Liberia.html>, Accessed 2 November 2021

<sup>vi</sup>City Populations, 2015, <https://www.citypopulation.de/en/sierraleone/admin/>, Accessed 2 November 2021

<sup>vii</sup>The World Factbook, <https://www.cia.gov/the-world-factbook/countries/sierra-leone/#geography>, date accessed 1 May 2021

<sup>viii</sup>County Development Agenda, 2012, <https://www.emansion.gov.lr/doc/GrandCapeMountCDA.pdf>, Accessed 2 November 2021.

<sup>ix</sup>Relief Web, 2021, <https://reliefweb.int/report/sierra-leone/sierra-leone-kailahun-district-profile-3-december-2015>, accessed 2 November 2021.

<sup>x</sup>[Google Maps](#)

<sup>xi</sup>City Populations, 2015, <https://www.citypopulation.de/en/sierraleone/admin/>, Accessed 2 November 2021. N/A

<sup>xii</sup>City Populations, 2008, <https://www.citypopulation.de/Liberia.html>, Accessed 2 November 2021

## Disclaimer

This factsheet is based on the latest available data as of 1st December 2021.

All necessary efforts have been taken to make sure that information contained in this publication is correct and not misleading. However, the possibility of errors or unintentional omissions cannot be excluded.

**For further information and comments, please contact:** UNDP Africa Borderlands Centre (ABC)

<https://www.africa.undp.org/content/rba/en/home/AfricaBorderlandsCentre.html> [hello.africaborderlands@undp.org](mailto:hello.africaborderlands@undp.org)

Any use of information, in full or in part, should be accompanied by an acknowledgement of UNDP ABC as the source. All rights reserved. © UNDP Kenya 2021